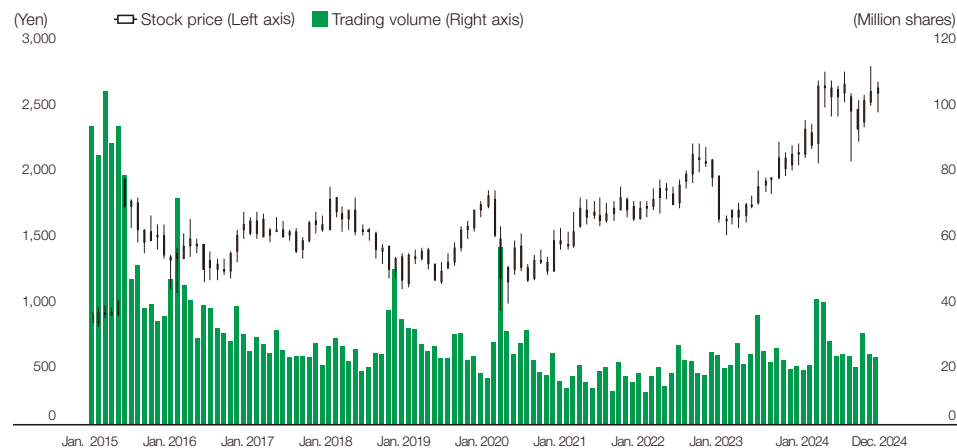


## Corporate Data

### Company Overview (As of December 31, 2024, unless otherwise noted)

Company Name	Tokyo Tatemono Co., Ltd.
Established	October 1, 1896
Capital	92.4 billion yen
Representative (As of January 1, 2025)	Katsuhito Ozawa Representative Director, President and Chief Executive Officer
Number of Employees (Consolidated)	4,925
Address (Head Office)	Tokyo Tatemono Yaesu Building 1-4-16 Yaesu, Chuo-ku, Tokyo 103-8285 Phone: (81) 3-3274-0111
Stock Listing	Prime Market of Tokyo Stock Exchange
Listing Date	September 1907
Securities Code	8804
Trading Unit	100 shares
Number of Shares Authorized	400,000,000
Number of Shares Issued and Outstanding	209,167,674

### Stock Price and Trading Volume



### Major Group Companies

#### Commercial Properties Business

Tokyo Fudosan Kanri Co., Ltd.  
Tokyo Building Service Co., Ltd.  
Shinjuku Center Building Management Co., Ltd.  
Seishin Service Co., Ltd.  
PRIME PLACE Co., Ltd.  
EXPERT OFFICE Co., Ltd.

#### Residential Business

Tokyo Tatemono Amenity Support Co., Ltd.  
E-State Online Co., Ltd.

#### Asset Service Business

Tokyo Tatemono Real Estate Sales Co., Ltd.  
Japan Rental Guaranty Co., Ltd.  
Nihon Parking Corporation  
Parking Support Center Corporation

#### Overseas Business

Tokyo Tatemono (Shanghai) Real Estate Consulting Co., Ltd.  
Tokyo Tatemono Asia Pte. Ltd.  
Tokyo Tatemono US Ltd.  
Tokyo Tatemono (Thailand) Ltd.  
TT Investment Holdings Australia Pty Limited

#### Fund Business

Tokyo Tatemono Investment Advisors Co., Ltd.  
Tokyo Tatemono Realty Investment Management, Inc.

#### Leisure Business

Tokyo Tatemono Resort Co., Ltd.

### Total Shareholder Return

